



FloatLED v1.07 - October 2010

*One of the few HD LED software on the market that does what it is supposed to do:
Shown HD activity and that's it!*

logo, product name and software copyright (C) Stone Oakvalley Studios 2010

What is the use of it?

Your regular drive LED on the hardware PC only have 1 physical LED light, meaning you'd never know if there was activity on another partition or physical drive. Think of it, we are in 2010, and still.....just one light?

If your laptop or desktop PC has a defective LED, you are hereby saved by FloatLED.

I don't really want to break my neck trying to see activity of the HD located down and right below underneath the table in the dark! We look at the screen, so, naturally HD LEDs should be located there too. Microsoft don't steal my ideas for intuition improvements! If you want, you can buy FloatLED source code for a couple of million \$\$.

It's just so cool to have full control of what the OS is doing to our HD's isn't it?.

You are remotely positioned away from computer/server setups and can't see or hear the HD working and need to know what's going on.

Should work as intended in

WindowsXP Home/Pro, Win2000, Win2008*, Win2003*, Windows Vista and Windows 7

* *"diskperf -y" may need to be performed from dos command.*

It won't even try to start on older Window OS's as FloatLED checks the Window version upon startup. That means, Win3.11, Win95, Win98, Win98SE and WinME.

Does monitor

- Physical SATA and IDE HD drives
- Physical USB removable SATA / IDE HD drives

Does NOT monitor

- CD-ROM / DVD-ROM drives
- Removable USB Memory Sticks, SD memory cards and similar flash based disks
- Network Drives
- Floppy Drives
- SUBST'd "?:\ " drive letters. If you try to SUBST B:\ to a physical drive, the B: would not be monitored, but rather the disk is was SUBST'd to. Just the way it is
- Possibly other non-standard Windows HD setups like 3rd party encrypted / compressed volume configurations

Rules for developing FloatLED

- An alternative to those other similar priced & bloated Hard Drive LED software on the market.
- Make FloatLED completely FREEWARE.
- No bloating, no ugly childish graphics/bad designed graphics, no bells, no whistles nor sounds.
- No skinned windows (typical of designers thinking they have created the “next big thing” within (GUI) design and layout).
- Just plain useful, and shows JUST exactly what it was intended to show....HD ACTIVITY!
- Super space optimized, intelligent design and no tray icon filler.
- Use very low or no CPU-Time at all.
- Clean install, INI prefs, single exe (portable too), no registry entries and no hidden code and extremely stable.

Conclusion: I just reached those goals. An fine example of a serious project and a superb end result.

Some insight into the existence of FloatLED

There were some useful alternatives out there, but they was not in my opinion thoughtfully tuned/designed to what the software was really trying to accomplish. It should be out of workspace, non-interrupting, easy, non bloated or contain other functionalities that do not belong in such a software. Putting it into the tray is also not a good idea, because some people “auto hide” their taskbar. Their software would be useless!!

The solution was to have an on-top drag-able and lock position window functionality. The design of the LED was also thought hard of. Other software seemed to bloat the graphics, making the LED look like LEDs in the real world, with chrome, borders and artwork taking up those precious pixels, why oh why? Just because Apple have a shitload of air in their artwork, it don't mean the rest of the hurd have to follow, you know.

Just show LED activity with read, write and read/write + the HD volume letter as small as possible and as clear graphics. Simple. So FloatLED was invented and created.

It will show all the volume letters in the system as blinking graphical icons simulating Read, Write or both at the same time. If you have 1 HD with 2 partitions, these will be shown as C & D for instance. The maximum amount of LED's is 26 (ABCDEFGHIJKLMNOPQRSTUVWXYZ) which is also the max in the operating system.

Installation & Usage

Use the provided installer to install it, a menu group will be made with FloatLED.exe, ReadMe_vx.xx.pdf and the Uninstall option along with the fact that the installer will add a entry in the Startup folder, so FloatLED start with Windows each time. To disable this, just run “msconfig” and uncheck it from the “Startup” pane.

The size of the window is 18, 24 or 30 pixel in height as default. Or, size it up yourself from 30 to 1024 pixels! If you have one drive, the icon/window will only be 26x18 pixels big horizontal or vertical (in default mode and including the minimize button). Place it somewhere on you screen, where it would not be in any way of your workflow. Or, just activate the click-through feature and you can click behind FloatLED too!

The FloatLED window (default)



The FloatLED window (in action)

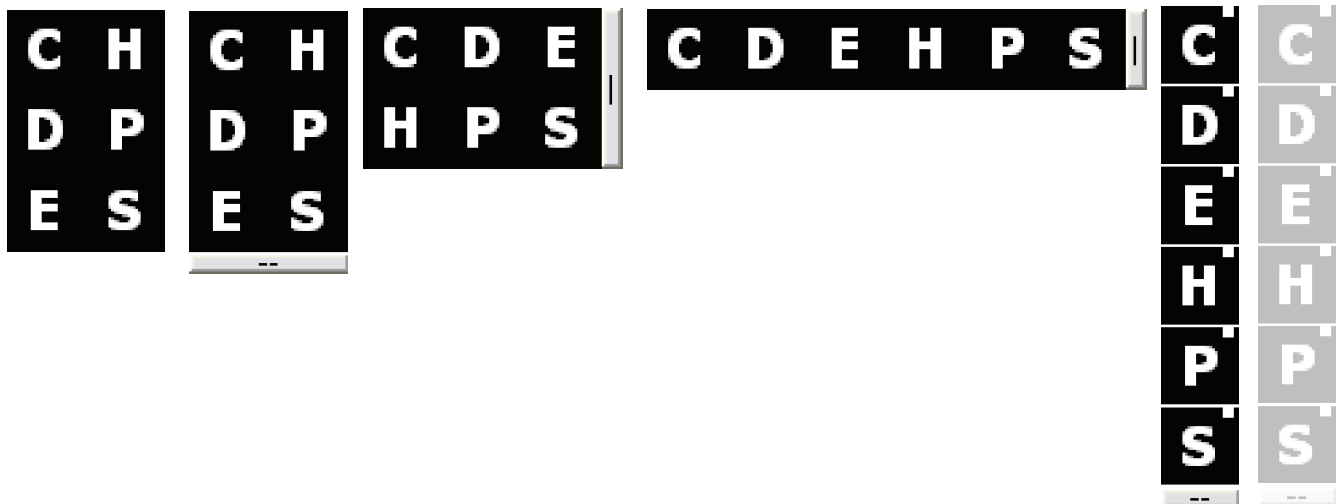


- Will light up whenever there is activity on the selected drives.
- FloatLED supports “click and drag” window to position it. Click once in the FloatLED window and drag it.
- Clicking on a drive icon in the window will open its contents with “explorer ?:\”, in root folder.
- “|” or “--” button will minimize FloatLED to a tray icon.

Note: Visuality and operation will be based on your choices made in the Config Panels.

Other FloatLED window appearances

Here are a number of different ways FloatLED can appear on your screen. Showing TwoRow, Minimize button, Vertical or Horizontal, Small Indication Box, Separator lines and Transperancy.



Right click on the FloatLED window to get the menu

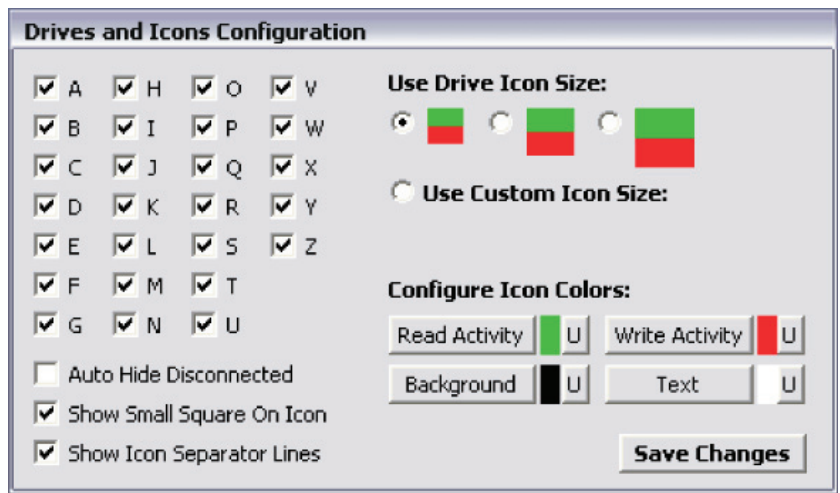
About FloatLED v1.07 - October 2010 View FloatLED Documentation
Configure Drives and Icons Configure Window Options
Set Window On Top (once) Disable Window On Top (once) Lock/Unlock Window Position Save Window Position Minimize To Tray
Restore FloatLED defaults Exit
Uninstall FloatLED
Make a donation through PayPal

About FloatLED + revision & date View FloatLED Documentation	= Show some info about FloatLED. = Opens up the documentation file. From V1.07 it's .PDF, previous versions .RTF.
Configure Drives and Icons Configure Window Options	= Configure Auto/Non-Auto Show/Hide drives and Icon Colors and sizes. = Configure Vertical Mode on/off, Minimize Button on/off, icon click configuration.
Set Window On Top (once)	= Will make FloatLED front most window on top once. Although some software might override it over time. Like Adobe CS2. Please also see the "Make window always persistent" function.
Disable Window On Top (once)	= Will turn off the front most on top window functionality. It works like any other window now and falls behind others.
Lock/Unlock Window Position	= Lock FloatLED's window position and make it undraggable.
Save Window Position	= Saves the window position
Minimize To Tray	= Minimize and disable the drive detection making FloatLED completely "dead" until you double click the icon again bringing up the FloatLED window.
Restore FloatLED defaults Exit	= Will reset everything back to author choices of FloatLED initial design. Overwrites all settings. = Exit and saves the settings
Uninstall FloatLED	= World's first uninstaller ever I would say. Though it would be useful and inspirational for others to copycat.
Make a donation through PayPal	= Several happy users from around the world love FloatLED so much they want to donate. It will take you to my PayPal donation link where you can enter any amount of \$ you feel.

Note: Every change/choice made by user is saved automatically in the preference file (FloatLED.ini)

Configure Drives and Icons Menu

Most of the changes done here are done in realtime preview, so you know what to expect when you click “Save Changes.



Single Drive Checkboxes, A-Z

Uncheck/check what you want to hide or show. Checked means always show, unchecked means always hidden.

Auto Hide Disconnected

Checked = FloatLED window will ONLY show drives detected by the Operating System and scale the window accordingly.

Unchecked = FloatLED window will show ALL and window will be in full width like shown and will respect whatever drives you manually would like to show instead (Single Drive Checkboxes above).

Show Small Square On Icon

Checked = FloatLED window will show icons with tiny square and respects

Unchecked = Don't show any tiny little square ever never.



Notice the tiny little white square in the top right corner. It indicates that Windows has successfully found the drive, which of course makes also FloatLED be able to detect it's activity.

Show Icon Separator Line

Turns on a small 1 pixel graphical line between each icons for clearer viewing or not. See example above.

Use Drive Icon Size

Will preset the size of the drive icons by FloatLED default suggestions.

Use Custom Icon Size

Enables you to scale the icons from 30 to 1024 pixels in height/width. If you have 26 drives, expect a veeeeery long line :-)

Configure Icon Colors

Allows for custom coloring of the Read, Write, Background and Text colors. The color box is the current color used. You may adjust them by clicking the appropriate button to see realtime changes. Press the “U” to undo to the last saved color.

Save Changes

Saves your configuration, exits window and resumes disk activity.

Configure Window Options

Most of the changes done here are done in realtime preview, so you know what to expect when you click “Save Changes.



Window Options

- ☐ Vertical Window Mode
- ☐ Dual Icon Window Mode
- ☐ Show Minimize Button
- ☐ Enable Click-Through (disables 'Left Double Click' below)
- ☐ Use Left Double Click to Explore Drive
- ☒ Use Middle Single Click to Explore Drive
- ☐ Enable Automatic Window Snap and Limiting
- ☐ Make window always persistent on-top (each 0.5sec)
- ☐ Prevent window on-top upon first-time run

Set Window Transparency:

Slider bar from 1 to 255, currently set at 255.

Save Changes

Vertical Window Mode

Will allow to display all icons vertically if checked. Default off is horizontally

Dual Icon Window Mode

Will allow to display all icons in a two row or two columns. It's divided of available drives shown / 2.

Show Minimize Button

Will add a small minimize button at the end of the FloatLED window.

Enable Click-Through (disables “Left Double Click” below)

Will enable the click-through feature. Mixed with transparency option, you can now click regular windows and stuff underneath FloatLED. Due to the function to work correctly, a brief flash is seen in of entire FloatLED window as you click.
Note: As this function interfere with the function below, that function will be disabled.

Use Left Double Click to Explore Drive

Will explore a drive when user clicks on any drive icon twice. Note: If the “Click-Through” was selected above, this function will be disabled and the “Middle Single Click” will be chosen instead.

Use Middle Single Click to Explore Drive

Will explore a drive when user clicks on any drive icon.

Enable Automatic Window Snap and Limiting

Will force the FloatLED window to automatically snap to edges of screen, be that multi or single screen. When this option is checked, note that you are unable to place the FloatLED window on-top of the Taskbar area, wherever it is placed on your screen. This is by FloatLED defaults checked on as it seems the most secure option for any first-time user.

Make window always persistent on-top (each 0.5sec)

Will force the FloatLED window to appear on-top at all times every 0.5 seconds. This function is very aggressive and could in some cases interfere with your fullscreen applications and games. If you also have the desire to put FloatLED on-top of your Taskbar area, wherever it is placed, you can be sure that FloatLED will fight for it's right to live...ehh.. float with this option checked on!

Prevent window on-top upon first-time run

Normally FloatLED would get on-top priority upon first-time run above all other windows running at that time. Here you can deactivate this feature and presumably kill the essence of the software, which is the urge to Float :-)

Set Window Transparency

Will enable the FloatLED window to become transparent and show whatever is underneath it. The value can be adjusted from 10-255. A value of 255 is off. Mixed with the “Click-Through” feature this can be a very effective way to make FloatLED really transparent in both visibility and usage (prevents FloatLED to obscure your other windows that much).

Save Changes

Saves your configuration, exits window and resumes disk activity.

Troubleshooting

Q: FloatLED was installed and seem to be running fine, but there is no activity on the LEDs!

A: This is caused by a registry setting called "Disk Performance Counter" which is probably disabled for some reason. (This seems to be OS defaulted to OFF in Windows 2003).

To enable the counter, and to know more, check this link: (Remember to restart after you've done the procedure)
<http://www.windowsnetworking.com/nt/nt2000/atips/atips25.shtml>

Or if you don't care, just run "cmd" via "START/RUN" on the OS menu, and type "diskperf -y" and press enter. See the result and restart your system. FloatLED should now happily show activity on the icons

Q: FloatLED icons flicker like insane insanity and seems messed up!

A: This is because the window on top feature tries hard to get your attention. But, full screen applications want your attention too and are doing so much faster than the standard window gadgets do. This is often seen in games.

To fix this, just choose the "Disable Window On Top (once)" from the FloatLED menu and make sure you really disabled the "Persistant Window" in the Window Config panel too.

To reset FloatLED back to defaults

Option #1: Just delete the FloatLED.ini file within the FloatLED installation directory and restart FloatLED. No problem!

Option #2: Choose the "Restore FloatLED defaults" from the right click menu.

Known issues or bugs

Can't think of any right now, nothing left unsolved in the forums or via emails either.

It does not mean it will behave successfully in your system. Remember that there are millions of ways how people organize their desktop, system and such. FloatLED was designed and tested for many years on completely standard Windows installations and performed excellent.

Several changes was done to the main loop for V1.04, hopefully closing the lid on OS Hibernation, Sleep or CPU usage problems as reported in V1.02-V1.03. From V1.04 through V1.07 most updates to FloatLED concerned very minor bugfixes, but mostly improvements and expansion of options for the user regarding visability or the logic of FloatLED to behave as human understandable as possible.

FloatLED.ini file contents by default

```
; FloatLED v1.07 - October 2010 by Stone Oakvalley Studios
; http://floatled.stone-oakvalley-studios.com
;
[Settings]
winX = 751
winY = 0
Locked = No
Auto Hide Disconnected = No
Explore Drive With Mouse Button = 3
Vertical Mode = No
Show Icon Lines = Yes
Show Small Square On Icon = Yes
Drives = 11111111111111111111111111111111
ReadColor = 00D800
WriteColor = FF2626
BackColor = 000000
TextColor = FFFFFFFF
IconSize = 1
Custom IconSize = 30
Window Transperancy = 255
HDD Detect Interval (seconds) = 10
Minimize Button = No
Persistant Window = No
Click-Through = No
Dual Icon Window Mode = No
Window Snap and Limiting = Yes
Ignore On-Top upon First-Time Run = No
```


Revisions and testing

v1.07 10 October 2010 (Major update)

Improved	Recompiled and changed some code to comply with official and final PureBasic V4.41 release.
Added	Support for A: and B: for those who has that configured to Hard Disks instead of the conventional Floppy 3.5" and 5.25" (old school style)
Added	Support for Custom IconSize to max 1024x1024 pixels
Improved	Detection of "Program Directory". Sometimes the Documentation could not be read for instance. Probably the INI file would go wander off into oblivion too.
Added	Transparency to FloatLED window. Tested with Win2003, WINXP, VISTA, WIN7.
Changed	The text "Set Window On Top" to "Set Window On Top (once)" in the menu, just to point out it's done once and not any persitant behavior.
Changed	The text "Disable Window On Top" to "Disable Window On Top (once)" in the menu, just to point out it's done once and not any persitant behavior.
Added	A menu choice to my website and into the menu giving happy users to donate some cash through my PayPal account. No, it won't be a shareware or buy-it-software in future, don't worry.
Changed	Documentation into PDF instead of .RTF. The Office package and wordpad gives me literally the creps in terms of "helpful" formatting and the awfullness of Rich Text Technology just makes me wonder why it even has to exist. It's flat out, just awful to work with!
Added	Click-through feature, it's selectable by ON/OFF in the Window Config. This feature will in that case disable the "Use Left Double Click to Explore Drive" as it would of course interfere if the user click two times through the FloatLED window!
Changed	Values in INI files that previously show 0 or 1. We live in a material world and I am a material boy, so it now reads in Human Readable Text "Yes" or "No" instead. Not case sensitive. If anything else is detected than "Yes" or "No", it's set to "No" by default.
Changed	INI entry "HDD Detect Interval" to "HDD Detect Interval (seconds)" so it's understandable what's going on.
Fixed	A bug causing FloatLED to either show garble drive icons or actually crash totally if the user said "No" to a question to exit FloatLED (from the menu). Make up your mind, god dammit :-)
Added	A window behaviour (window snap) feature to make sure FloatLED don't wander off screen during nasty configuration by the user or by manual hacking in the INI file :-). If FloatLED is moved outside borders, it will make sure it stays 100% visible in length or height
Added	Dual Icon Window Mode (Row or Column when applicable) functionality, works as Drive Shown / 2. So if you have 8 drives, it gets 4 by 4 in 2 rows. Support both horizontal and vertical modes. Minimize button is scaled accordingly, but if you got only 5 drives shown, you'll get one grey area of nothingness.
Added	More real-time changes when you click any option in the Config Windows. Neat to vitness.
Removed	"Cancel Changes" button in both Config Windows as I find the function and meaning more or less useless. Another reason was that most of the changes are done realtime now, so you see what happens anyway.
Added	"U" buttons as in "Undo Color Change" for each of the Color Options you could change. This had to be created since "Cancel Changes" button was removed and the inclusion of real time preview of coloring done instead.
Fixed	Behaviour of "Show Small Square On Icon" so it can be visible both in Auto Hide Mode and in Anti-Hide Mode of drive icons. Only a small unlogical behaviour from previous versions of FloatLED.

Fixed	A possible User Configuration incident if all drives were unchecked and save changes, the FloatLED window would disappear completely. Now, at least 1 icon is forced to show anytime.
Improved	Detect if FloatLED persistent window and window snap was off and that the FloatLED was positioned in the Taskbar area (it would be obscured and difficult to reach again). Either move the Taskbar or End Process to FloatLED would fix that, but now, FloatLED automatically jumps out of the area wherever the Taskbar is positioned and sized to prevent it falling behind it.
v1.06	27 December 2009
Improved	When checking on the Auto Hide Disconnected all the other separate drive checkmarks are ghosted to indicate a IGNORE feature for the user. Meaning they cannot be edited and thus be interpreted as fully functional checkmarks if so.
Improved	Change the window position for the config windows. In previous version it was forced to appear below the FloatLED window +50 pixels. Now, it just centers on the screen. Easier.
v1.05	20 November 2009
Added	Option to remove the tiny little square drive indicator if Auto Hide Disconnected was disabled.
Added	Added small tooltip info to each drive gadget showing stuff like: DriveLetter, DriveName, Filesystem and Free MB / Total MB or “?:\ not found in system!”.
v1.04	22 August 2009
Improved	Recompiled and changed some code to comply with official and final PureBasic V4.30 release
Added	Vertical mode for window and icons.
Added	Brought back the “auto HD detection scale window mode as in 1.02” and thus removing the little notch box during this configuration.
Improved	Main and sub loops reconstructed/rewritten to handle events more silently, hopefully causing cpu time usage reported to drop to near zero....or at least over time in average.
Changed	Put menu choices that belong to configuring of drives into the Configure Drives window instead of filling up menu.
Changed	Put Window Config Options into its own window instead of filling up menu.
Added	Added drive explore behavior with option of LEFTDOUBLE CLICK or SINGLE MIDDLE BUTTON
Added	Changed some text elements on the menu. WindowOnTop is now spelled Window On Top
Added	Added menu item for documentation file.
Added	Option to show or hide separator line between icons.
Improved	Drive Window Config loop: It was put into a sub loop causing some delay when configuring drives. Ouch! Bad mistake.
Testing	Tested on plain installs of Windows 2000 and Windows 2003. No problems. Tested on local machines for 1 week, no issues detected.

v1.03 14 February 2009

- Removed Adjust Window Transparency function was removed. It messed up with the ontop features of FloatLED and resulted in strange behavior when dealing with full screen apps. I have no time to investigate into the matter, and basically I find the option useless. This because, one can adjust the colors anyway with the color requester making it appear more "mild" on the screen for those who thought that the initial default design was too harsh.
- Removed Removed the hibernation, sleep, standby detection mode. This because it seems the OS is sending other power messages during screen saver (even encountered that FloatLED minimized automatically while installing Photosynth!). This means the surveillance function for hibernation, sleep, standby WILL NOT minimize/deactivate FloatLED while the OS is trying to shut down. (there was one bug report that FloatLED was caught in a 100% dead stuck CPU loop upon OS waking up, but I never experienced that while testing on 3 different machines). So now, it is removed.
If I had time to investigate it and filter it better the option would have stayed. But better to make the software stable than hanging on to loose ends and half tested functions.
- Changed When a HD was detected by OS, FloatLED would update the drive icon with a little square to indicate it being detected by the OS. This was interpreted by a user as a foreign letter C with a square above it. So, in order to avoid confusion, the little box was moved from top center of icon to top left of icon instead. Looks pretty good now.
- Added OS check flags for Window 2003 and 2008 was added. FloatLED denied to start itself if not.
- Testing Tested on plain installs of Windows 2000 and Windows 2003. No problems.
Tested on local machines for 1 week, no issues detected.

v1.02 24 January 2009 (Major update)

- Intro Features added to FloatLED based on forum posts and email inputs from worldwide users along With my own ideas and bug fixes...although only one bug since v1.01 :)
Actually v1.02 was half done during July 2007 and have been in testing up till January 2009
Update v1.01 to v1.02 was done during 3 days (ca. 12 hours of coding)
- Update Recompiled and change source where needed for complying with Pure Basic v4.20 engine.
- Update Replaced "ReadMe.txt" with RTF file instead: "Readme_v1.02.rtf" with more documentation!
- Update Cleaned up the menu design. Added Menu Bars to better group functions of FloatLED visually.
- Bug Fix Window position could be reset to 0,0 sometimes. Fixed now.
- Change Completely rewrote the automatic HARD DISK Detection and visibility of the drive icons.
- In previous versions of FloatLED, ONLY drives detected in the system was shown as drive icons. The rest was always hidden from view. This has now changed to the following:
All 24 drive icons are by default shown. This can be configured by user.
- If a drive is detected a small colored square (same color as used on the drive letter and line separator color, which follows user choices if changed) will appear in the drive icon's top right area indicating it is active in the OS. No square means the disk is not detected by the OS.
- This new approach of showing ALL drive icons even it it's not detected will let the user decide what drive icons to show regardless. It allows the user to have more freedom to have a "known" hard disk like an USB drive visible at all times, if it's being plugged in and out a lot. Prevents automatic resizing of the FloatLED window.
- FloatLED will check for new drives each xx sec (set in the INI file to 10 sec by default). You may edit it yourselves by editing the entry "HDD Detect Interval" in the FloatLED.ini. The value should be set in seconds. Min value is 10 sec and Max value is 10000 sec (166.66666 minutes)

Change	If FloatLED was already running nothing happens i.e. prevents multiple instances of it. On previous versions a nagging requester came up, but I seen no point in that anymore.
Added	A minimalistic RIGHT adjusted minimize button for those who are lazy to not go through the menu to minimize FloatLED to tray. This was added as an option to the menu. Either show or hide it. Default is hide as I never have the need to minimize FloatLED, but users requested it.
Added	“Set WindowOnTop” menu choice if FloatLED had previously lost its on top status. (Adobe Premiere Pro 2/Adobe Audition 2 for instance)
Added	Disable FloatLED’s WindowOnTop menu item added
Added	Colors can now be set in own palette requester for Read, Write LEDS, background and font + separator line color. Colors saved in INI As Hex Values
Added	3 different sizes of icons now possible. Small, medium and large. Font will scale accordingly. Font is always Arial for the drive icons. Choosing other fonts can cause unpredicted results and Was not implemented due to lack of bug/font/time testing issues. Arial is such a good all around solid font anyway, won’t you say?
Added	Double clicking on a drive icon will open it using the OS function i.e “explorer.exe ?:\” where ? is the drive letter.
Added	Window Transparency function. Affects the entire window and icons. One can use the mouse wheel within the FloatLED window area to adjust it real time! Option also added to menu for those who do not have a mouse wheel around :)
	Note: This is only applicable For Window 2000, Windows XP, Windows Vista, Windows 7 and probably Windows x (future)
Ignored	<i>“Hovering over the drive icons will show a tooltip of its drive name, free space & used space etc.”</i> Decided not to include this, as it has to be updated by regular intervals causing “banging” on the OS function GetDiskFreeSpaceEx_, GetLogicalDriveStrings_ functions etc. After all FloatLED is an HD Activity software and NOT any system hardware information system. True to my belief of “bloating” software is a decease of many programs today, which FloatLED and its creator takes very seriously ;-)

v1.01 Mid 2006

Bug Fix	The installer redirected FloatLED’s directory into documents and settings, saving a ini file in the current user directory. Added code to retrieve the actual program directory instead.
Added	Save INI is done when user clicks on LOCK or UNLOCK window pos.
Added	Menu choice for saving position. Exit will also save current settings. Note: Due To the user possibility or OS shutting down FloatLED by “End Process” will cause a loss of configuration done by user. This is now workaround by saving INI every time something is changed via the menu by user.
Added	Menu choice to enable minimize to tray with tray icon. When de-minimizing is done, the tray icon is removed.

v1.0 Early 2006

Added HD detection for Hard Drives and rescaling of window/icons - Tested for 3 days - no crashes or hang-ups detected. Released to the public via SoftPedia.com

v0.9 Sometime in 2005

Tested for 1 year until 2006 on two computers - no crashes or hang-ups detected.

Thanks and acknowledgements

Huge thanks to my friend Svein Engelsgjerd for letting me use a customized snippet code from his own DriveGleam.dll which he uses in his DriveGleam software - a more advanced LED monitoring software with PAR: LED features++

FloatLED was programmed by Stone Oakvalley - with the superb PureBasic from Fantaisie Software - www.purebasic.com

FloatLED uses code from DriveGleam.dll (c) 2005 Engeltekt - Svein Engelsgjerd (waxhead@online.no)
DriveGleam was programmed in C by Svein Engelsgjerd.
<http://www.dirtcellar.net>

Thanks for the positive and constructive feedback from worldwide users.
You brought forward new ideas and wishes for FloatLED during 2007/2008/2009/2010.

Awards:

<http://www.softpedia.com/progClean/FloatLED-Clean-36486.html>
<http://floatled.software.informer.com/awards/>

If you Google for FloatLED stay away from any other site than my own, Softpedia and Software informer.
Basically, just hit one of the 3 top most results and you are safe.

Regards,
Stone Oakvalley
www.stone-oakvalley-studios.com
post@stone-oakvalley-studios.com

For updates, forum, older versions, manual, visit

<http://floatled.stone-oakvalley-studios.com>

Trivia and/or just random garble

- How in the world did I manage to write 15 pages documentation for such an simple software?
- I wanted to release FloatLED v1.02 earlier, but it turned out that evening became night, and night became early morning the day I started working on the v1.02....thus causing 1 day of delay....just to find out that day 2 brought some problems with the icon redraw and all the other minimalistic functions and security measures I added in the coding aftermath.
- I managed to solve an issue during sleep, thus when I woke up from after 6 hours of coding the problem had solved itself and I inserted the code snippet from the back of my brain..... and problem solved.
- The source code size changed from 26kb to 35kb during the upgrade of v1.01 to v1.02
- To take momentary breaks from the coding, I ended up writing pointless stuff in this trivia instead.
- A lot of stuff not really thought of initially on my todo list was added during v1.02 coding, making the planned release date 3 days later than expected. It's dangerous to start to code you see. Never can stop a rolling stone!
- V1.04 was in my mind for several weeks until I decided to brute force myself during a Friday night after a good evening rest to code 95% of everything that I had thought of. 1 week later, déjà vu and v1.04 + documentation was finally available.
- V1.07 was the longest time I had sat down with coding since V1.01 so many years back. Coding time for V1.07 was about 30 hours (including documentation and website design). The year went fast by since V1.06 was released in December 2009, mostly due to the fact that my legendary Commodore Music Preservation MP3 project (SOAMC=) had a major update going on for 1 entire year. Check it out at www.paula8364.com and www.6581-8580.com. It's really insane and heaven if you are into nostalgic chip and computer music. And, yes, it is the biggest one ever created.